

Jamison commercial re
New York City

710
Greenwich

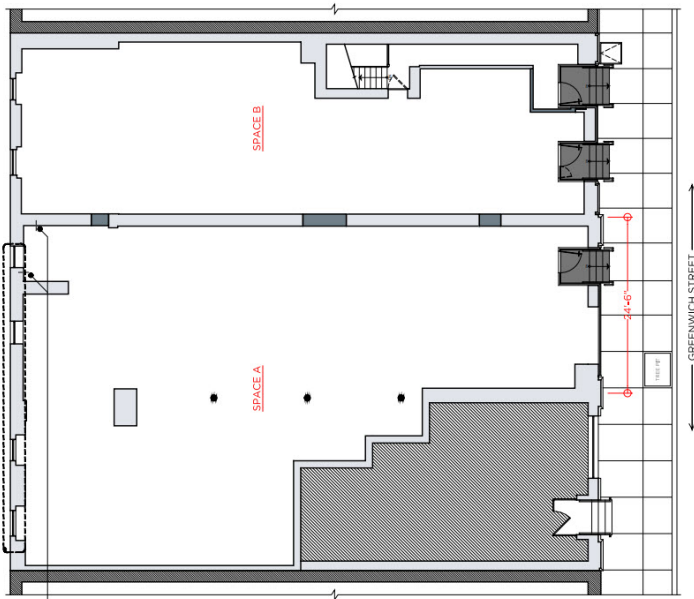


710 Greenwich Retail

- 40' of frontage
- 5,500 sq ft on street level
- 2,500 sq ft in the lower level
- 14' ceilings on the street level, 11' ceilings in the lower level
- Close proximity to Meat Packing District, and Fashionable Bleecker Street

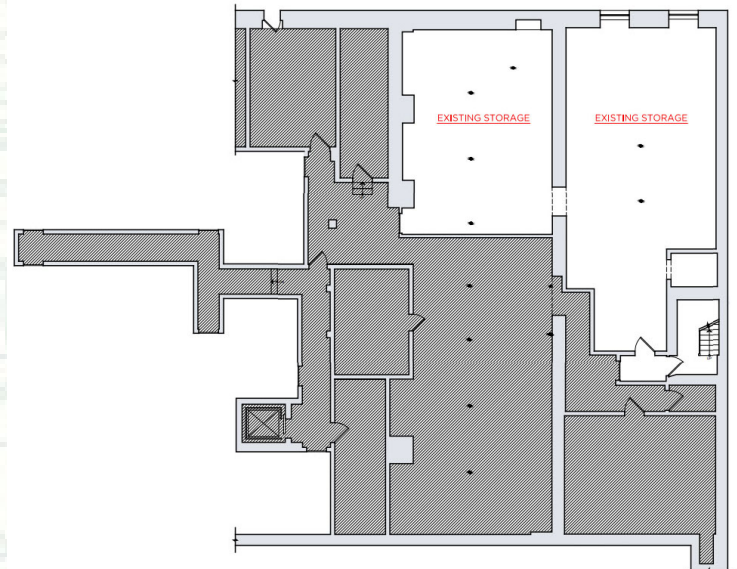
For Lease
8.000 SQFT
Space

Price available
upon request



Space A and space B

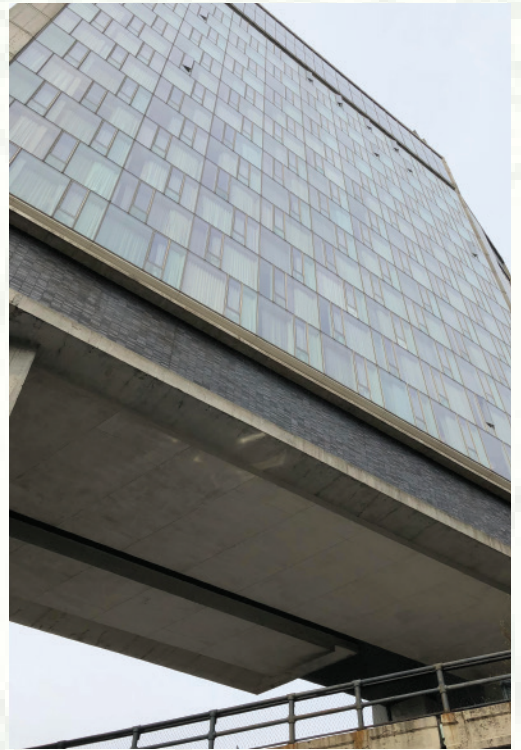
Lower Level



Jamison commercial re

New York City

710 Greenwich



Nearby Retailers and Points of Interest In The West Village and Meat Packing District:

West Village:

Urban Zen
Sandro
Nars
Zadig&Voltaire
Bond No. 9
Robert Marc
James Perse
Bruno Cucinelli
Jo Malone

Paul Smith
Cynthia Rowley 7 For
All Man Kind Annick
Goutal
Intermix
Sisley Paris Boutique
Village Apothecary

Meat Packing District:

The Standard Hotel
Tesla
Apple Store
The Whitney Museum
Samsung
Restoration Hardware
Hermes Paris
Jefrey's Department
Store
The High Line

Hugo Boss
Warby Parker Asics
Diane Von Furstenberg
L'Occitane
Lulu Lemon Athletica
Blue Bottle Cofee
Starbuks
Alice and Olivia